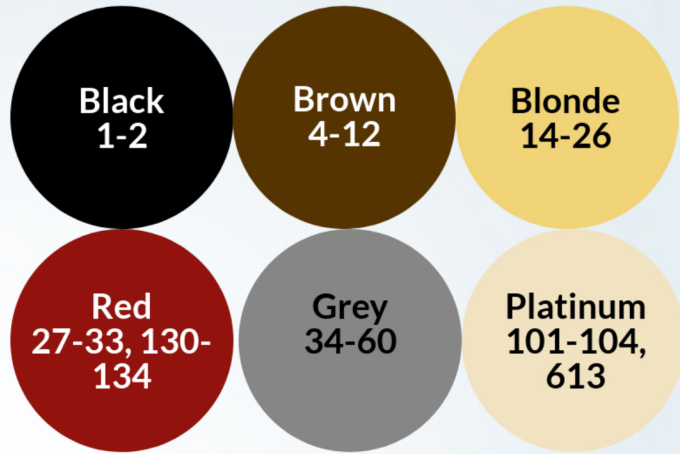


Faux Hair Color Cheat Sheet

Check with your wig manufacturer for details. Color codes are typically industry standard.



Jon Renau Specific:

<ul style="list-style-type: none"> / EQUALLY BLENDED COLOR F BLENDED COLOR WITH THE DARKER COLOR SOLID AT THE NAPE MB MIXED BLEND COLOR T TIPPED TT TWO TONE COLOR, BLENDED, TIPPED WITH LIGHTER COLOR AND DEEPER NAPE V VIOLET TONE 	BLENDED/TIPPED
<ul style="list-style-type: none"> H COLORS BLENDED WITH 20% HIGHLIGHT FS FASHION SYRUP COLLECTION WITH BOLD HIGHLIGHTS RH COLORS BLENDED WITH 33% HIGHLIGHT 	HIGHLIGHTED
<ul style="list-style-type: none"> RN RENAU NATURAL COLORS THAT ACHIEVE VIBRANT HUES WITHOUT DYES RO RENAU OMBRE COLORS ACHIEVE A NATURAL GRADUATION OF COLOR S SHADED/GRADIENT COLOR STARTING AT THE BASE (ROOTED) 	EXCLUSIVE



Tips for Online Shopping

- Colors vary by computer monitor
- Search a color on Google and YouTube to get a better look at it
- Consider the color of your bio hair and undertones of your skin (ie. natural brunettes may look better in rooted blondes)
- Buy a color ring
- Don't be afraid to experiment!

Notes:

- Colors will appear different based on each fiber. Synthetics will have more contrast especially at the root, and cooler tones. Heat Resistant Fiber is warmer, with a softer root. Human Hair has lighter highlights, less contrast, and a softer shaded root. This is very apparent in 12FS8.
- Human hair shades are dyed with textile dyes to avoid fading, so UNLESS it's a Renau Natural piece, do not attempt to alter the color.
- Renau Naturals can be lightened or darkened up to 3 levels. These shades are warmer by default. Consider having a stylist tone it if you prefer a cooler shade.